



Aras Simulation Management 23

Upgrading from Release 14

Document #: D-008419
Last Modified: 9/23/2022

Copyright Information

Copyright © 2022 Aras Corporation. All Rights Reserved.

Aras Corporation
100 Brickstone Square
Suite 100
Andover, MA 01810

Phone: 978-806-9400

Fax: 978-794-9826

E-mail: support@aras.com

Website: <https://www.aras.com>

Notice of Rights

Copyright © 2022 by Aras Corporation. This material may be distributed only subject to the terms and conditions set forth in the Open Publication License, V1.0 or later (the latest version is presently available at <http://www.opencontent.org/openpub/>).

Distribution of substantively modified versions of this document is prohibited without the explicit permission of the copyright holder.

Distribution of the work or derivative of the work in any standard (paper) book form for commercial purposes is prohibited unless prior permission is obtained from the copyright holder.

Aras Innovator, Aras, and the Aras Corp "A" logo are registered trademarks of Aras Corporation in the United States and other countries.

All other trademarks referenced herein are the property of their respective owners.

Notice of Liability

The information contained in this document is distributed on an "As Is" basis, without warranty of any kind, express or implied, including, but not limited to, the implied warranties of merchantability and fitness for a particular purpose or a warranty of non-infringement. Aras shall have no liability to any person or entity with respect to any loss or damage caused or alleged to be caused directly or indirectly by the information contained in this document or by the software or hardware products described herein.

Table of Contents

Send Us Your Comments	4
Document Conventions	5
1 Overview.....	6
2 Prerequisites	6
2.1 Eligibility Verification	6
2.2 Upgrade Files Location	6
3 Upgrade Process	7
3.1 Notification and Backup	7
3.2 Applying the Upgrade Patch	8
3.3 Confirming the Application Installation	10

Send Us Your Comments

Aras Corporation welcomes your comments and suggestions on the quality and usefulness of this document. Your input is an important part of the information used for future revisions.

- Did you find any errors?
- Is the information clearly presented?
- Do you need more information? If so, where and what level of detail?
- Are the examples correct? Do you need more examples?
- What features did you like most?

If you find any errors or have any other suggestions for improvement, indicate the document title, and the chapter, section, and page number (if available).

You can send comments to us in the following ways:

Email:

TechDocs@aras.com

Subject: Aras Product Documentation

Or,

Postal service:

Aras Corporation
100 Brickstone Square
Suite 100
Andover, MA 01810
Attention: Aras Technical Documentation

If you would like a reply, provide your name, email address, address, and telephone number.

If you have usage issues with the software, visit <https://www.aras.com/support/>

Document Conventions

The following table highlights the document conventions used in the document:

Convention	Description
Bold	This shows the names of menu items, dialog boxes, dialog box elements, and commands. Example: Click OK .
Code	Code examples appear in <code>courier</code> text. It may represent text you type or data you read.
Yellow highlight	Code with yellow highlight is used to draw attention to the code that is being indicated in the content.
Yellow highlight with red text	Red color text with yellow highlight is used to indicate the code parameter that needs to be changed or replaced.
<i>Italics</i>	Reference to other documents.
Note:	Notes contain additional useful information.
Warning	Warning contains important information. Pay special attention to information highlighted this way.

1 Overview

This document describes how to upgrade Aras Simulation Management from Release 14 to Release 23. These changes affect the Aras Innovator code tree and the database.

2 Prerequisites

The following prerequisites are required to upgrade to Aras Simulation Management 23:

- Aras Simulation Management 14
- Aras Innovator 23
- Aras Process Engine 18

Note: Aras Process Engine is a new requirement for Aras Simulation Management that is introduced in Release 23.

Contact Aras Upgrade Services at support@aras.com when upgrading from Aras Innovator releases 12.0 SP18 and earlier.

2.1 Eligibility Verification

The following steps outline the process to verify the current Aras Innovator code tree and database meet the minimum requirements to apply the Aras Simulation Management updates:

1. Log into **Aras Innovator** as an **Administrator**.
2. From the **Main Menu**, select **Help** and **About**.
3. Verify the dialog displays **Release 23**.
4. Close the dialog.
5. From the **TOC**, select **Administration** and **Variables**.
6. Confirm the following variables display:

Version Major	Version Minor	VersionServiceUpdate	Simulation Management	Process Engine
14	0	9	14.0.1	14.0.1

Contact Aras to discuss upgrade options if the information displayed is different than what is outlined in this document.

2.2 Upgrade Files Location

The upgrade files are available in Aras Simulation Management CD image, in `Aras Simulation Management 23 Upgrade Patch.zip`. These files contain the components necessary to upgrade both the code tree and database.

3 Upgrade Process

The following steps outline the process of upgrading Aras Simulation Management Release 14 to 23. Test runs in a non-production environment are recommended prior to executing an upgrade in the production environment.

3.1 Notification and Backup

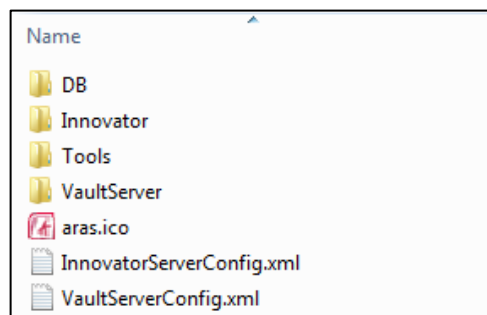
The following steps outline the process of sending an upgrade notification and performing a backup of the Aras Simulation Management application:

1. A notification should be sent to the users of a scheduled production environment upgrade date and time. It is recommended to provide a 24-hour notice, as well as a 15-minute reminder prior to taking the system offline.
2. Back up the code tree:

The **Code Tree** consists of the files and folders installed when Aras Innovator was initially installed. An example of a default path to the **Code Tree** is as follows:

C:\Program Files (x86)\Aras\Innovator

The contents of the **Code Tree** are as follows:



The following steps outline the process to locate the installation folder:

- a. Type **Control Panel** in the **Search** field on the **Taskbar** and press **Enter**. The **Control Panel** window appears.
 - b. Click Programs and Features.
 - c. Locate and select **Aras Innovator**. The installation path appears at the bottom of the **Control Panel** window.
 - d. Access the **Code Tree** from the installation location and perform a backup of all files and folders.
3. Disconnect all users from the database.
To prevent database changes, change the database connection string in the `InnovatorServerConfig.xml` file from **<DB-Connection...>** to **<xDB-Connection>** and restart the **w3svc service (IIS)**. All session will expire and new connections to the Aras Innovator database through the existing instance will be prohibited.
 4. Backup the database and place the file in a safe location. This is used to restore if the upgrade fails.
 5. Enable database connections.

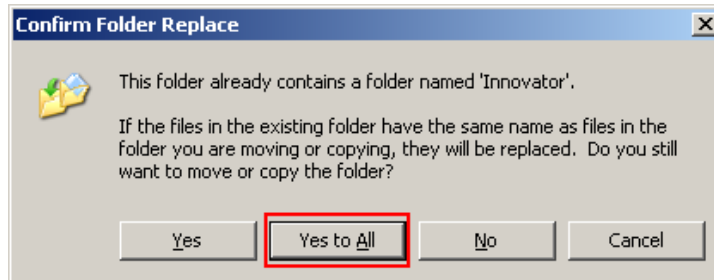
Once the database backup is complete, enable the database connection string in the `InnovatorServerConfig.xml` file. Change the **<xDB-Connection>** to **<DB-Connection>** and restart the **w3svc service (IIS)**.

3.2 Applying the Upgrade Patch

The following steps outline the process of applying the **Upgrade Patch**:

1. From the **Aras Simulation Management 23 CD Image** folder, locate and extract the **Aras Simulation Management 23 Upgrade Patch.zip** file.
2. Copy the **Innovator** folder from the Upgrade Patch to the **Aras Innovator Code Tree** location. This will overwrite the existing **Innovator** folder and files.

It is recommended that a Systems Administrator performed this step on the server.



3. Ensure that client machines renew their cache to get all required updates by incrementing filesRevision attribute in the **Code Tree**.
 - a. From the root of the **Code Tree**, open the `InnovatorClient.config` file within the **Innovator, Client** folder.
 - b. Change the value of the filesRevision attribute. The value should be changed from std to 2, 3, 4, etc.

```
<キャッシングModule moduleEnabled="true" filesRevision="2" />
```

- c. Save the changes to the `InnovatorClient.config` file and close it.

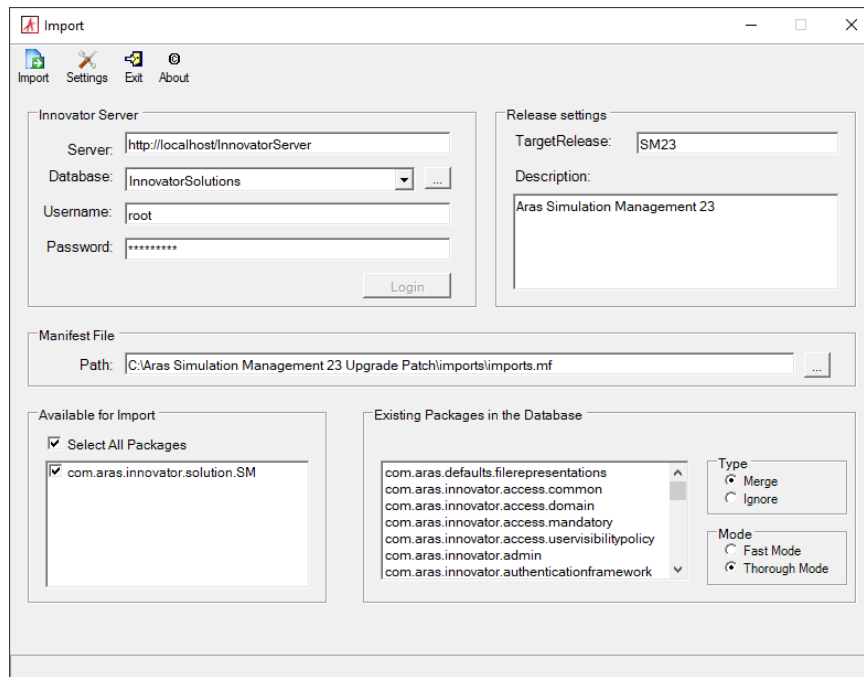
Note: Incrementing this attribute sends a signal to each client machine next time it connects to Aras Innovator that it needs to reload the client cache.

4. Import the database package from **Aras Simulation Management 23 Upgrade Patch.zip** file using the **Package Import Export Utilities** For more information on using this tool, refer to the *Aras Innovator - Package Import Export Utilities* document.

Note: If you do not have Aras Process Engine installed, this import is going to fail.

- a. Enable the “Super User” login to perform this step.

b. Browse to the \PackageImportExportUtilities\Import\ folder and run the Import.exe file



c. Input the connection information

- **Server** = The connection URL for Aras Innovator
- **Database** = The target Aras Innovator database
- **Username** = root
- **Password** = Password for “root” login (The default password used is “innovator”)
- **Target Release** = SM23
- **Description** = Upgrade to Aras Simulation Management 23
- **Manifest File Path** = The manifest is found in the folder \Imports\import.mf
- **Available for Import** = Select all packages
- **Type** = Merge
- **Mode** = Thorough Mode

d. Click on **Import** to import the file

Note: Remember to disable the “Super User” login once complete. This login should not be enabled in production.

3.3 Confirming the Application Installation

Use the following steps to check if database has applied the Aras Simulation Management changes to Aras Innovator, correctly.

1. Log in to Aras Innovator as an administrator
2. From the TOC, select **Administration\Variables**.
3. Confirm one of the following sets of variables are listed:

Name	Value
Simulation Management	14.0.2

If any part of this test fails, revert to the backups and contact Aras Support at support@aras.com.